

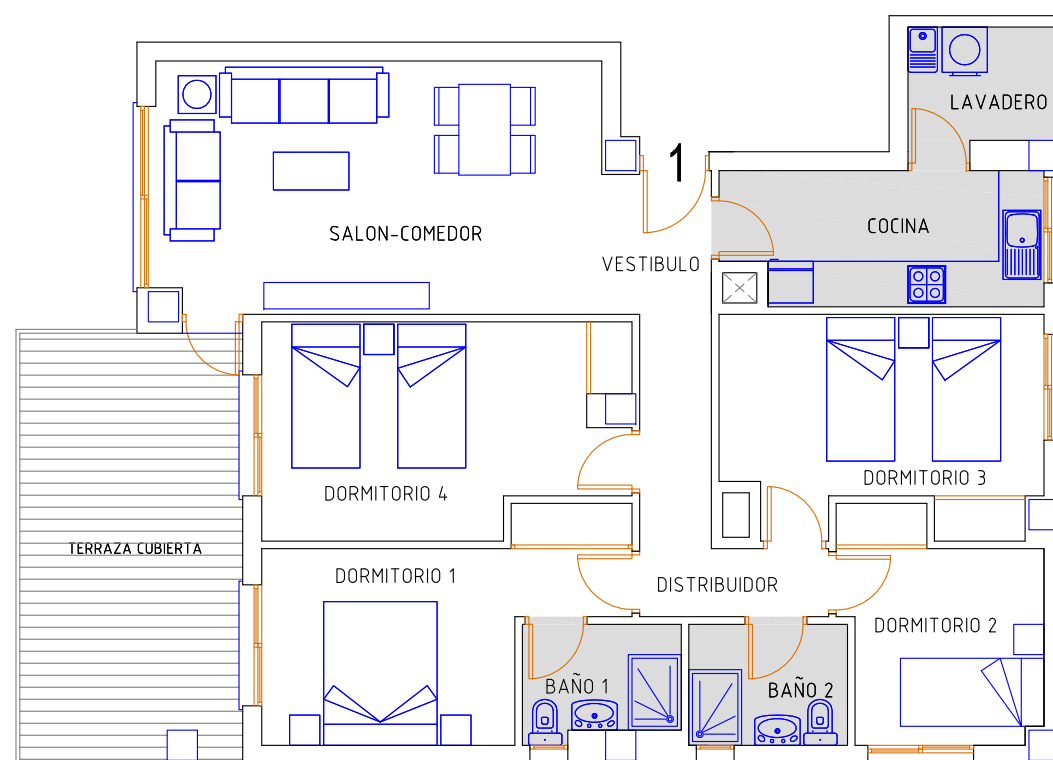


Mil Palmeras de Campoamor

EDIFICIO LUCERNA III

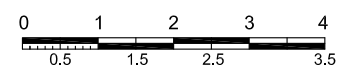
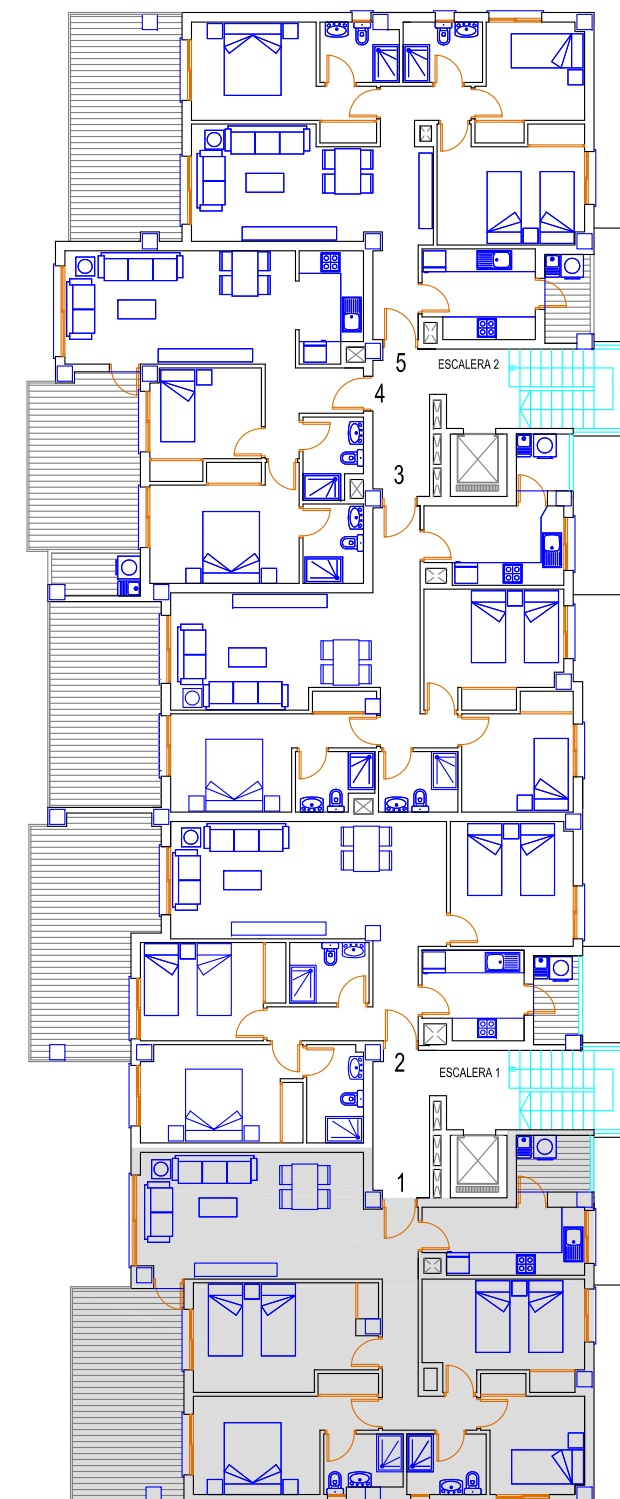


VICTORIA PLAYA
Grupo Inmobiliario



PLANTA 1º - 1

PLANTA 1º



PLANTA 1º - 1	
VIVIENDA	98,81
TERRAZA CUBIERTA	17,18
TERRAZA DESCUBIERTA	0,00
LAVADERO	4,02
P/P ELEMENTOS COMUN.	10,11
TOTAL CONST.VIVIENDA	130,12m2