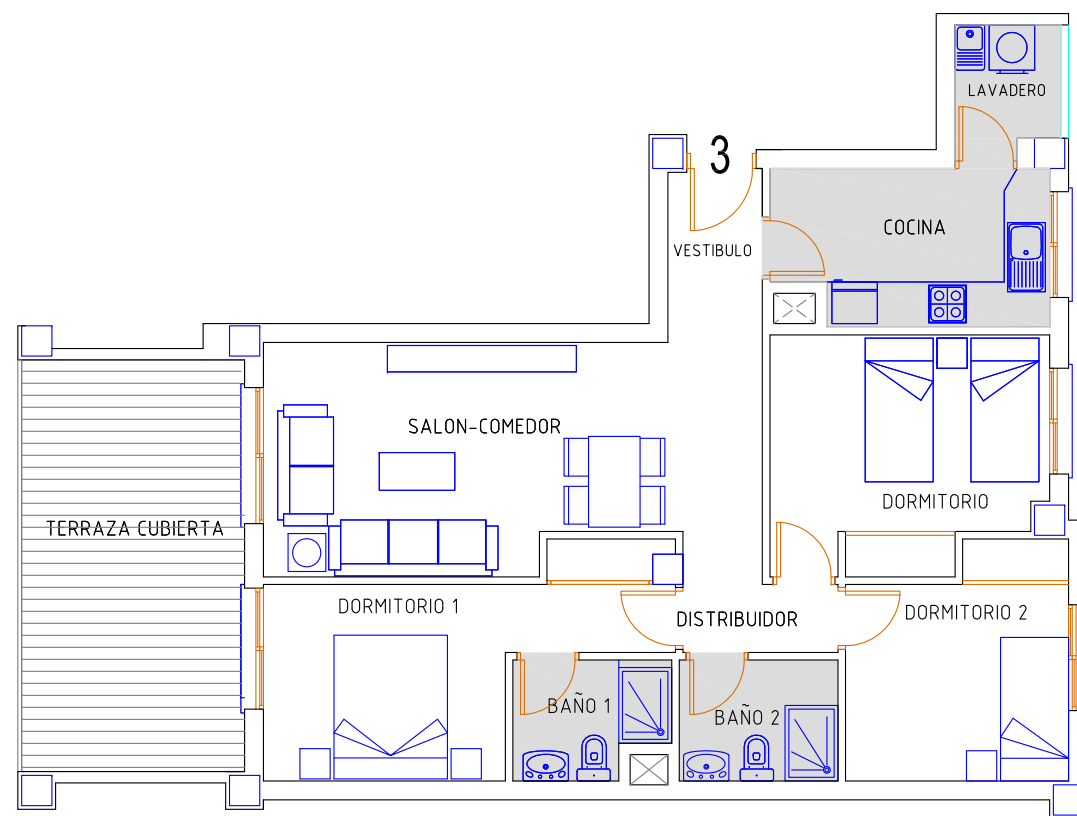




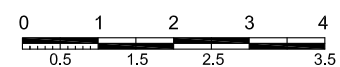
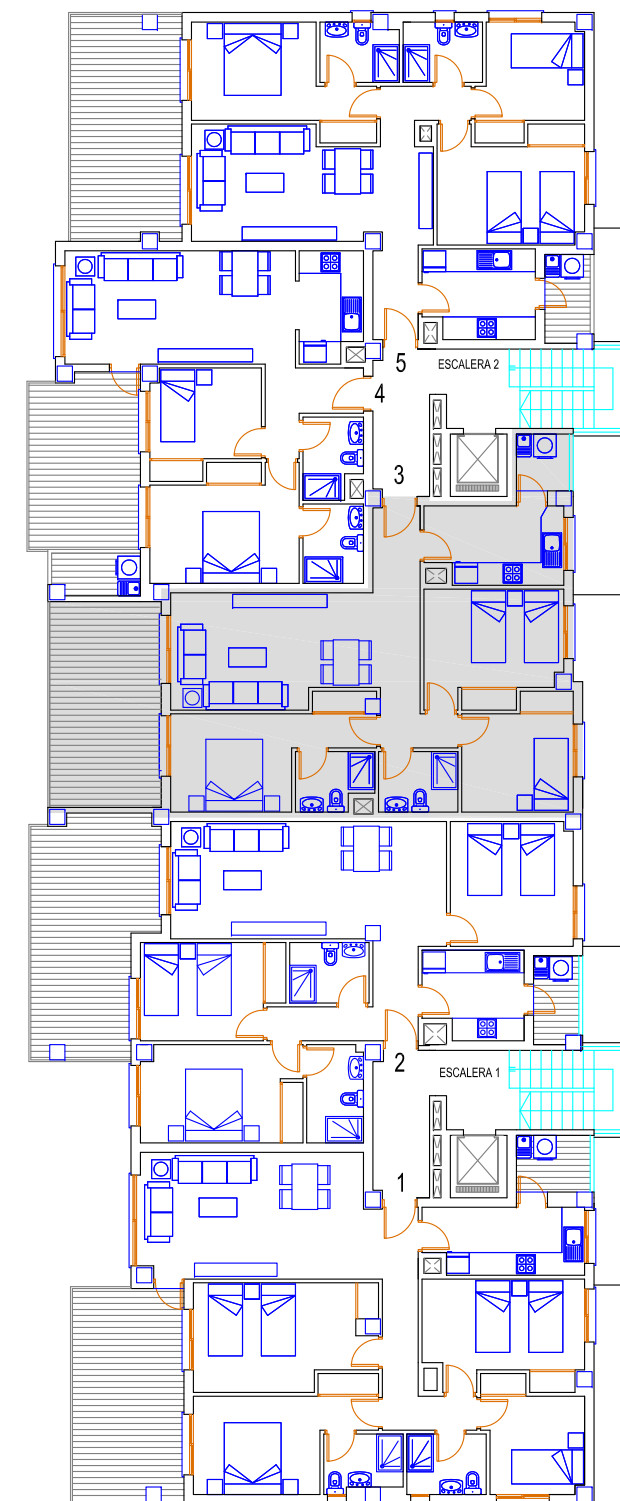
Mil Palmeras de Campoamor

EDIFICIO LUCERNA III



PLANTA 1º - 3

PLANTA 1º



PLANTA 1º - 3	
VIVIENDA	79,31
TERRAZA CUBIERTA	16,56
TERRAZA DESCUBIERTA	0,00
LAVADERO	3,00
P/P ELEMENTOS COMUN.	8,41
TOTAL CONST.VIVIENDA	107,28m2