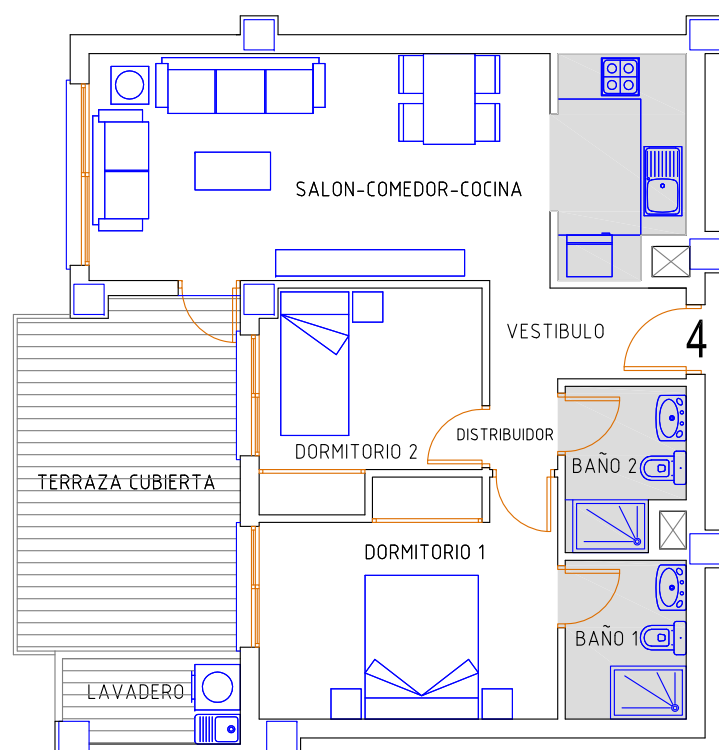




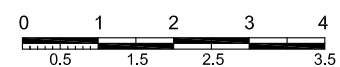
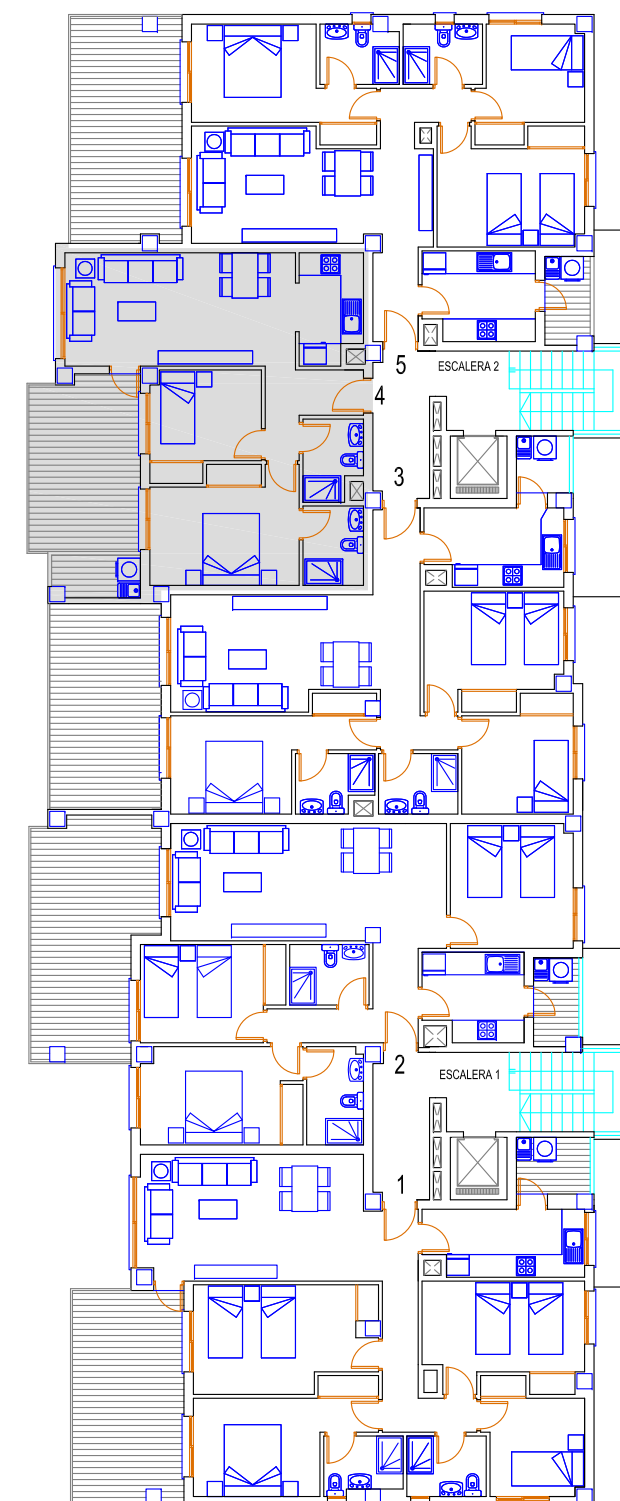
Mil Palmeras de Campoamor

EDIFICIO LUCERNA III



PLANTA 1º - 4

PLANTA 1º



PLANTA 1º - 4	
VIVIENDA	62,20
TERRAZA CUBIERTA	13,94
TERRAZA DESCUBIERTA	0,00
LAVADERO	3,38
P/P ELEMENTOS COMUN.	6,75
TOTAL CONST.VIVIENDA	86,27m2