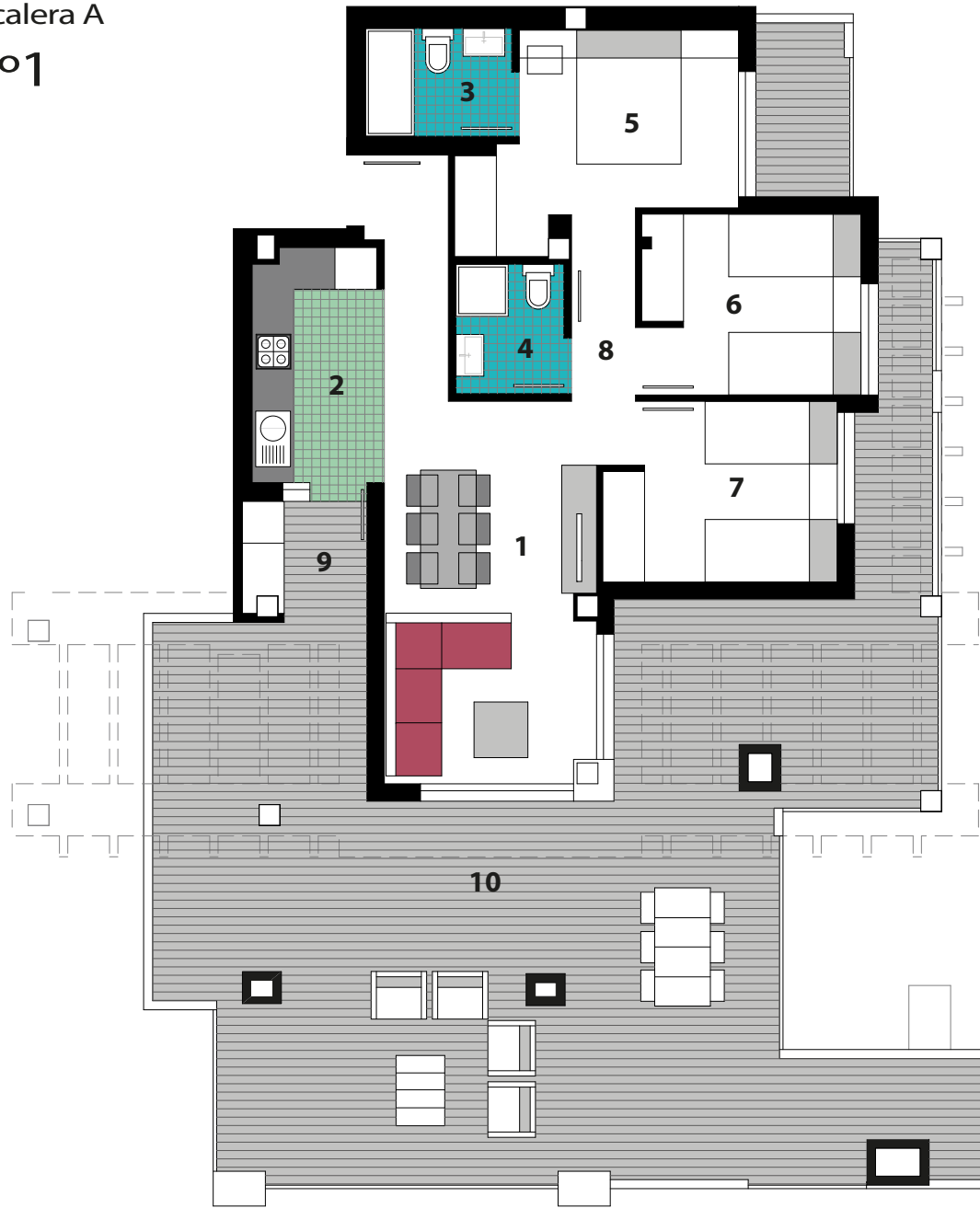
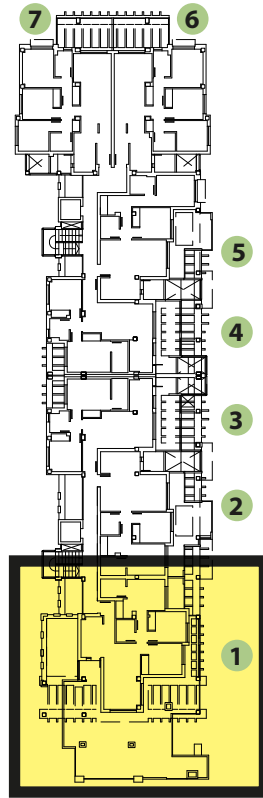
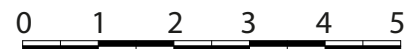


Planta 2°-N°1



Planta 2°-N°1



- 1.Estar-Comedor
- 2.Cocina
- 3.Baño.1
- 4.Baño.2
- 5.Dormitorio-1
- 6.Dormitorio-2
- 7.Dormitorio-3
- 8.Paso
- 9.Galería
- 10.Terraza

Vivienda	74,07
Terraza Cubierta (100%)	6,95
Terraza Descubierta (100%)	82,55
Elementos Comunes	7,99
Total Superficie Const.	171,56