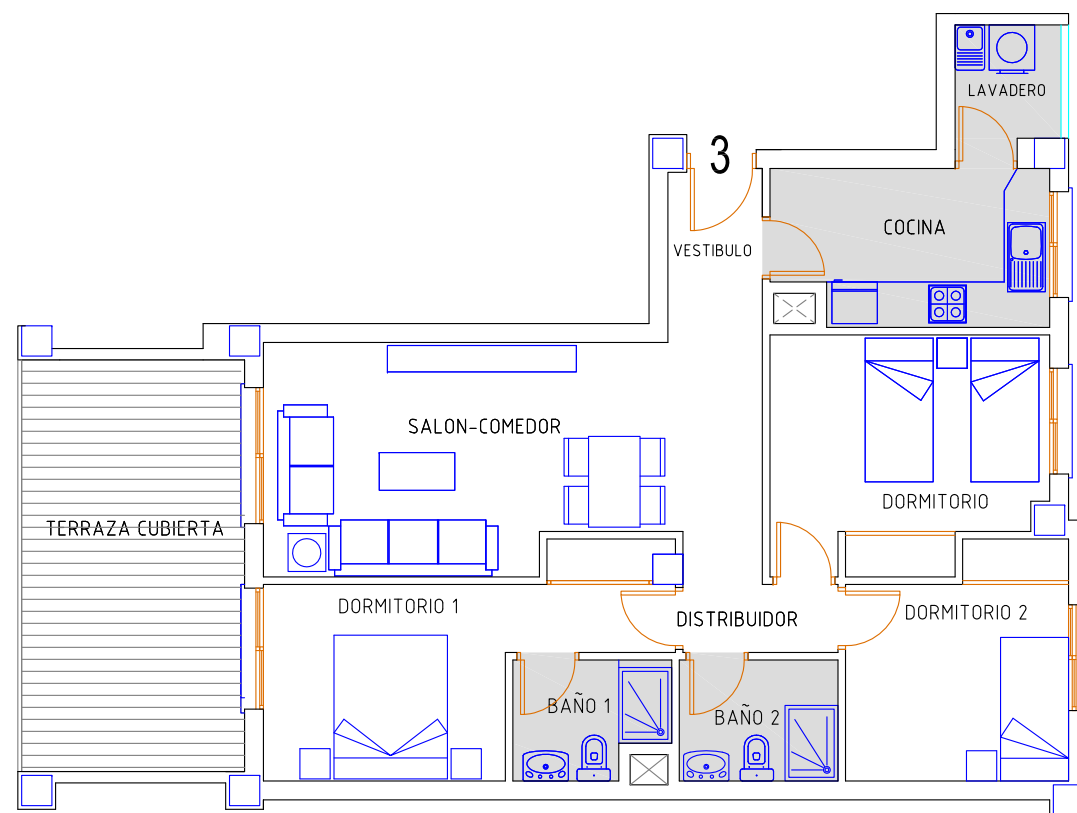




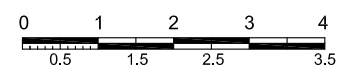
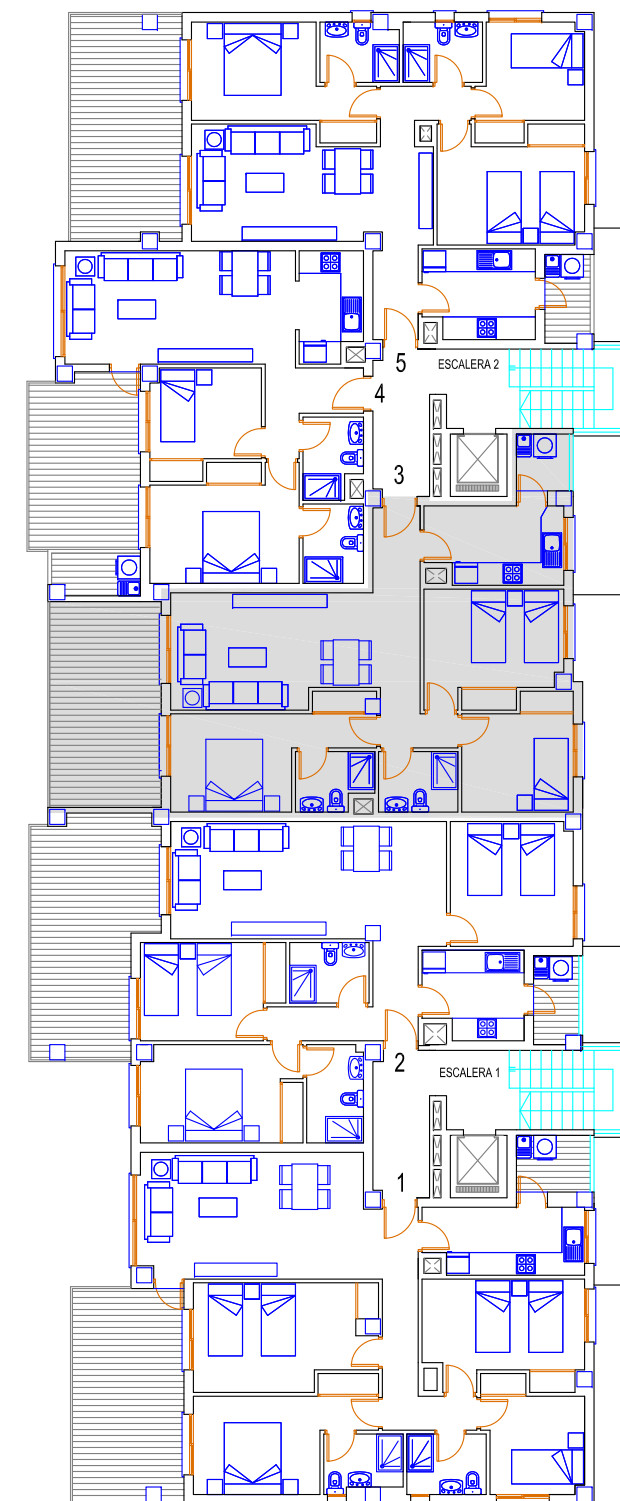
Mil Palmeras de Campoamor

EDIFICIO LUCERNA III



PLANTA 3º - 3

PLANTA 3º



PLANTA 3º - 3	
VIVIENDA	79,31
TERRAZA CUBIERTA	16,56
TERRAZA DESCUBIERTA	0,00
LAVADERO	3,00
P/P ELEMENTOS COMUN.	8,41
<b>TOTAL CONST.VIVIENDA</b>	<b>107,28m2</b>