

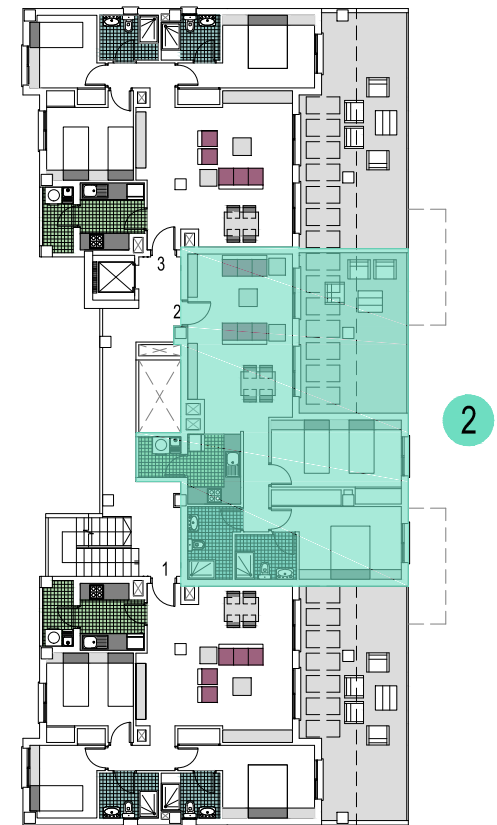
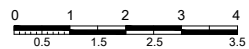


TIPO 2 (PLANTA 5º)

SUPERFICIE CONSTRUIDA

| | |
|-----------------------------|---------------|
| VIVIENDA TIPO | 74.70 |
| TERRAZA DESCUBIERTA | 22.14 |
| LAVADERO | 2.80 |
| P/P ELEMENTOS COMUN. | 9.32 |
| TOTAL SUP.CONSTRUIDA | 108.96 |

* Superficie P/P Elemen.Comunes aproximada



(PLANTA 5º)