

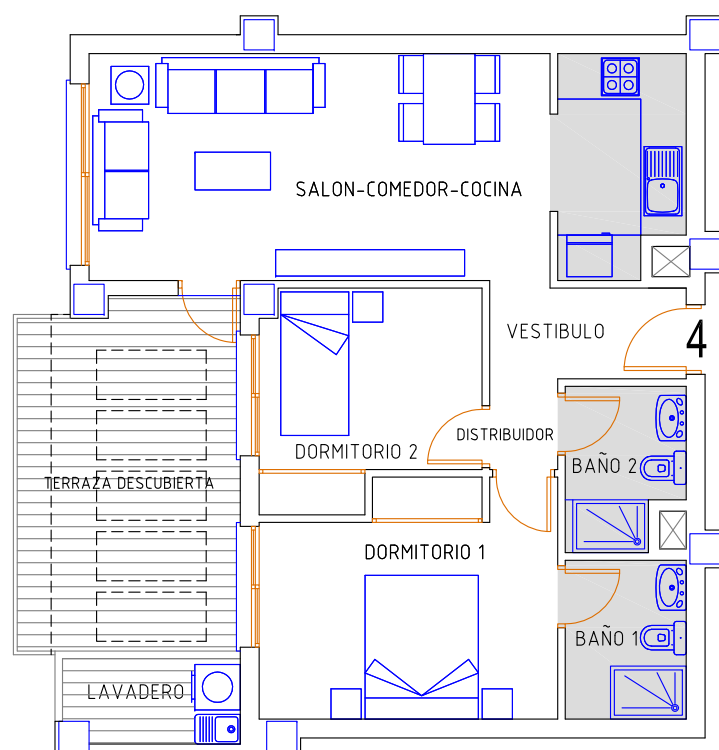


Mil Palmeras de Campoamor

EDIFICIO LUCERNA III

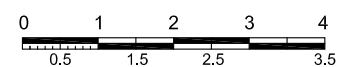
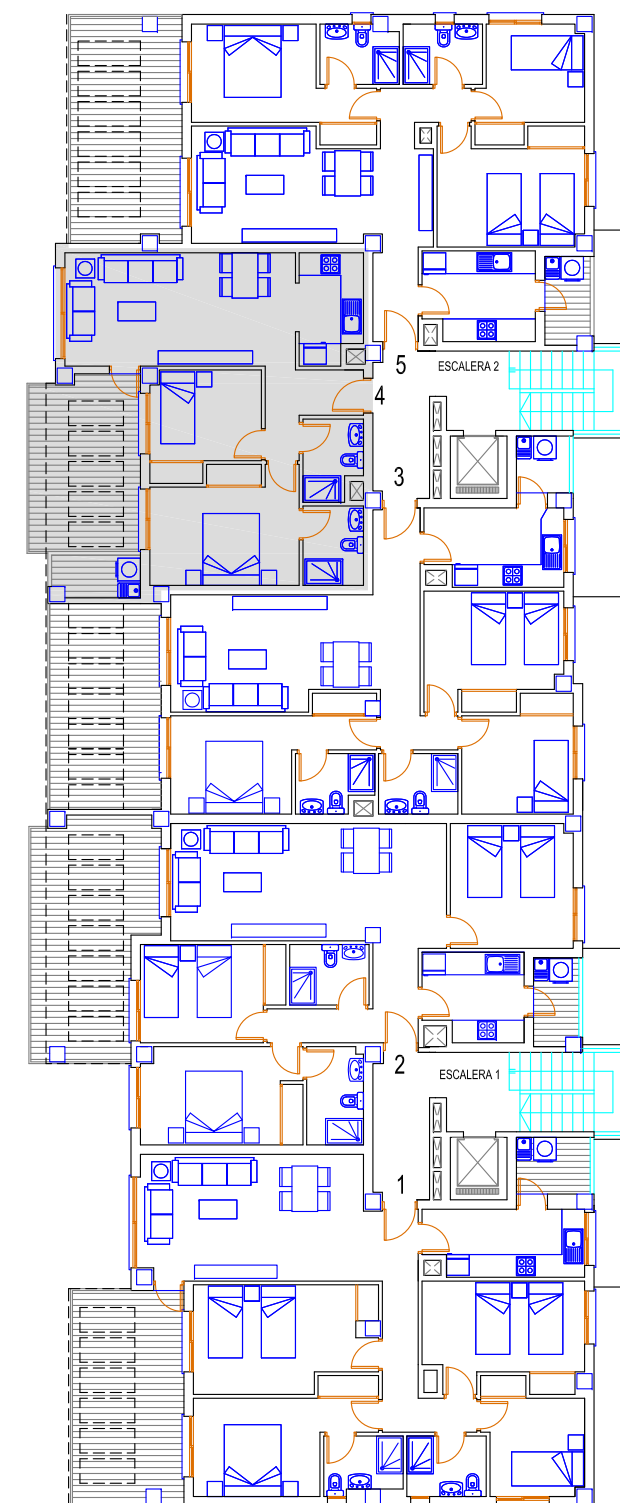


VICTORIA PLAYA
Grupo Inmobiliario



PLANTA 5º - 4

PLANTA 5º



PLANTA 5º - 4	
VIVIENDA	62,20
TERRAZA CUBIERTA	0,00
TERRAZA DESCUBIERTA	13,94
LAVADERO	3,38
P/P ELEMENTOS COMUN.	5,41
TOTAL CONST.VIVIENDA	84,93m2