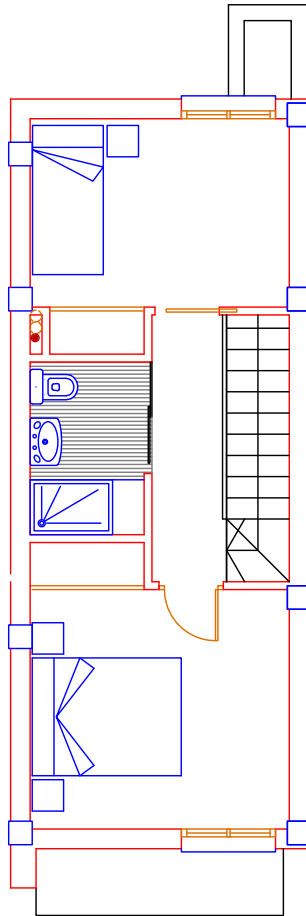
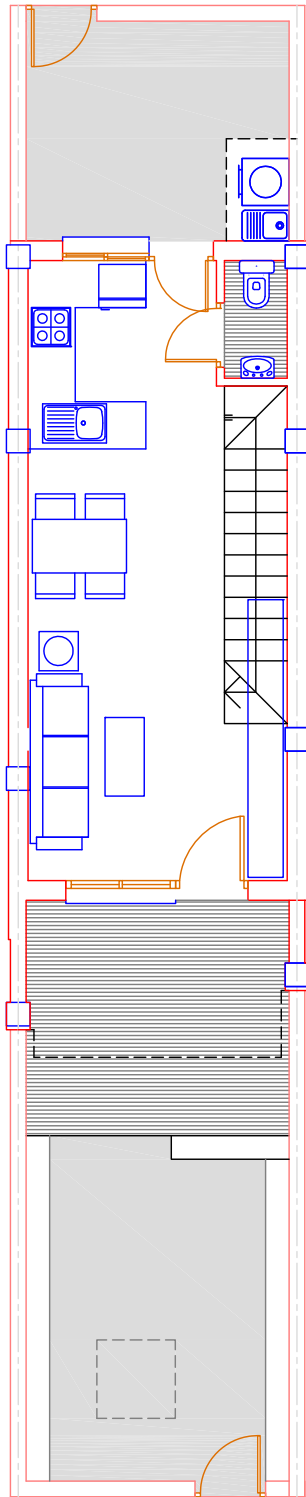
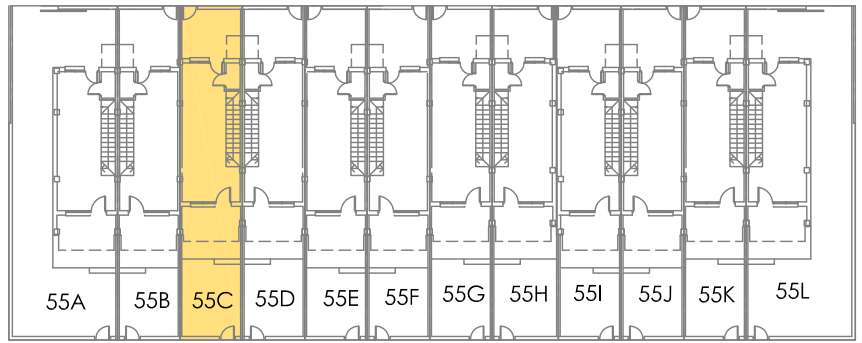


55C



MODELO-B

SUP. PL.BAJA	29,82 m2
SUP. PL.ALTA	33,90 m2
TERRAZA CUBIERTA	6,76 m2
TOTAL SUP. CONSTR	70,48 m2
+ TERRAZA DESC	3,47 m2
JARDIN + PATIO	27.40 m2

SUPERFICIE PARCELA : 67,45 m2

