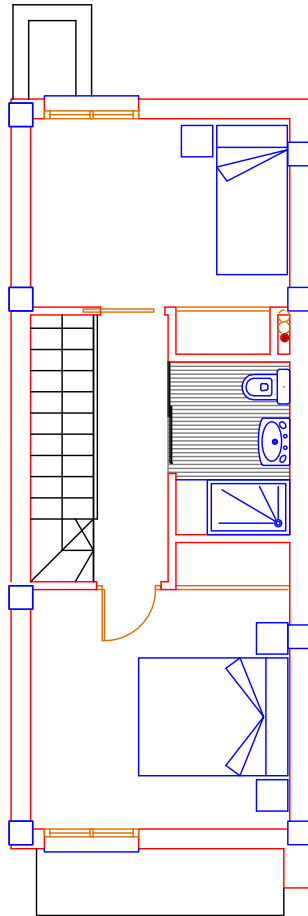
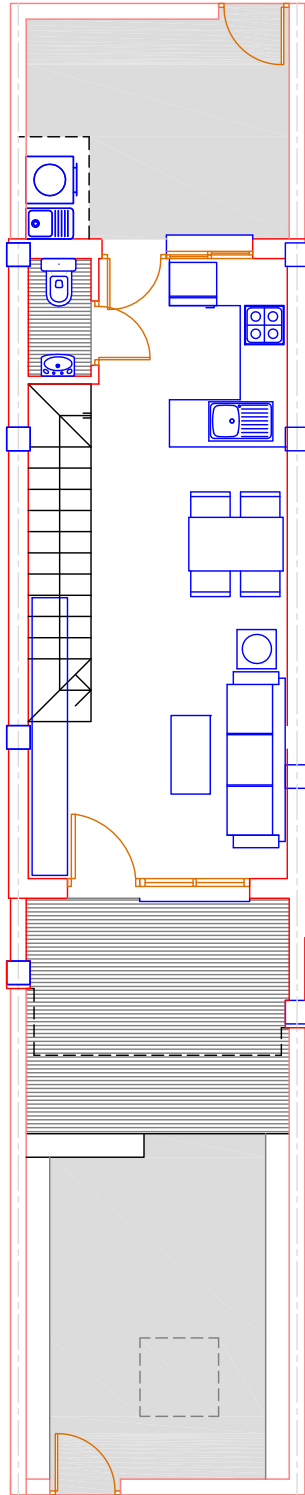
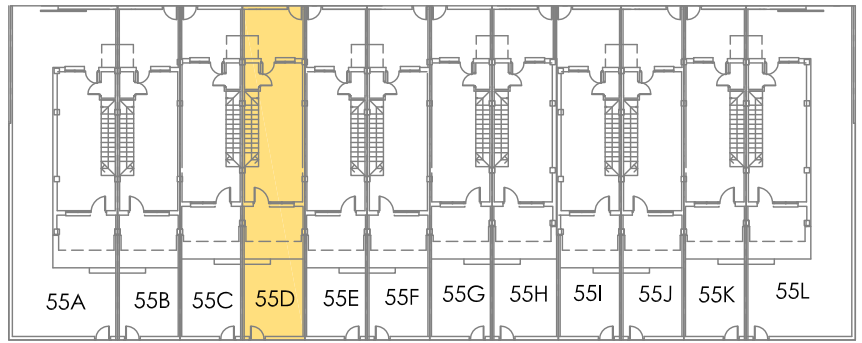


55D



MODELO-B

SUP. PL.BAJA	29,82 m ²
SUP. PL.ALTA	33,90 m ²
TERRAZA CUBIERTA	6,76 m ²
TOTAL SUP. CONSTR	70,48 m²
+ TERRAZA DESC	3,47 m ²
JARDIN + PATIO	27.40 m ²

SUPERFICIE PARCELA : 67,45 m²

