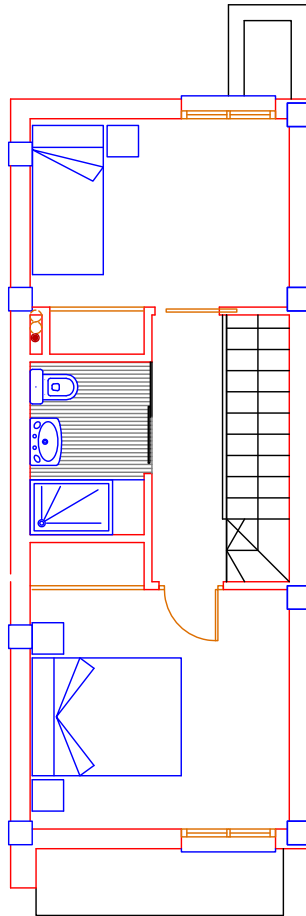
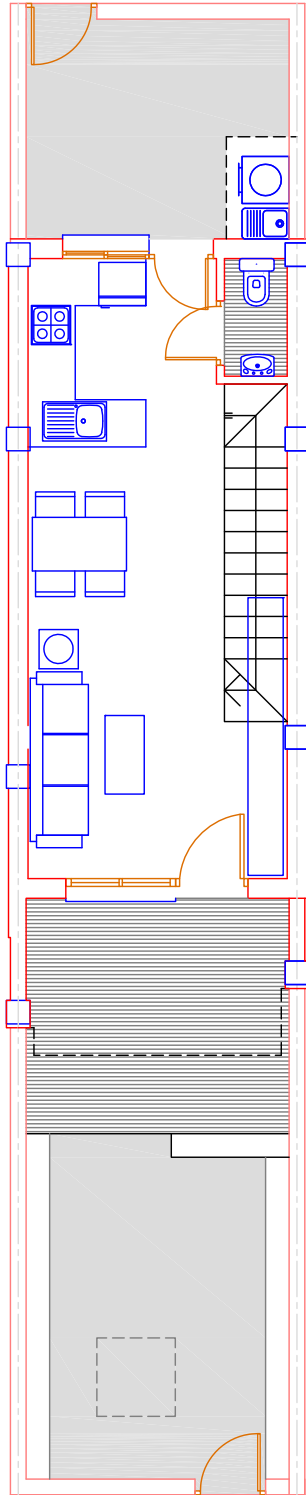
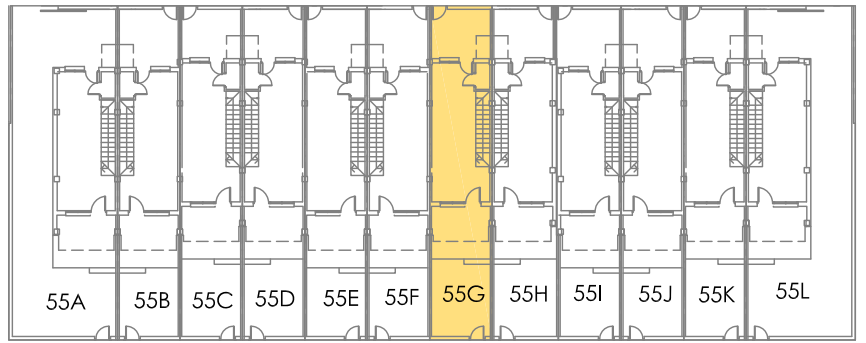


# 55G



## MODELO-B

SUP. PL.BAJA .....	29,82 m2
SUP. PL.ALTA .....	33,90 m2
TERRAZA CUBIERTA .....	6,76 m2
<b>TOTAL SUP. CONSTR .....</b>	<b>70,48 m2</b>
+ TERRAZA DESC .....	3,47 m2
JARDIN + PATIO .....	27.40 m2

SUPERFICIE PARCELA : 67,45 m2

